



Public Health and COVID

CUPE Ontario Health & Safety Conference 2020

Dr. Elizabeth Rea
Associate Medical Officer of Health
Toronto Public Health

Public Health is...what?

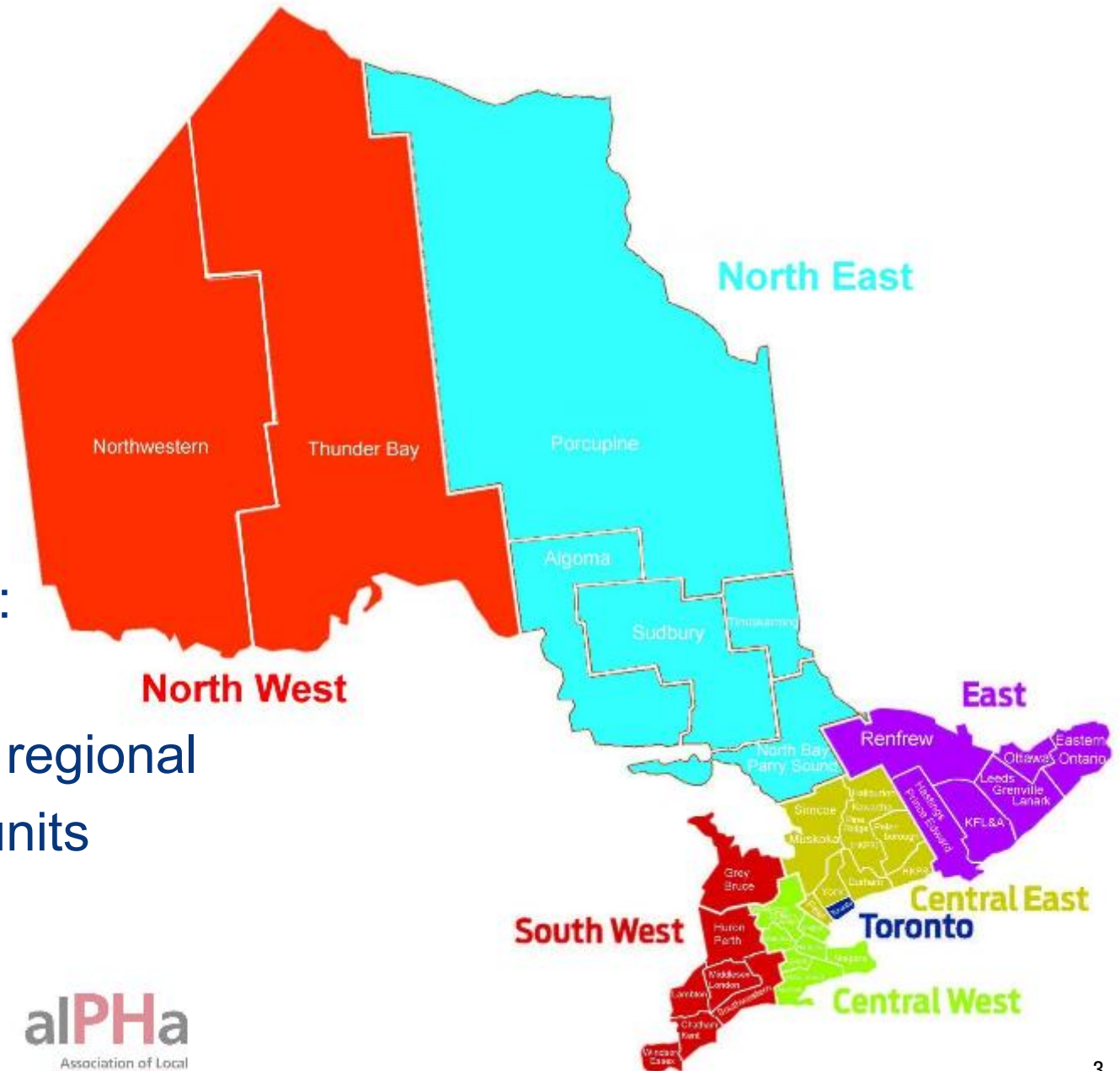
The organized efforts of society to keep people healthy, prevent disease and premature death, and improve quality of life

→ “Community as a whole is the patient”

→ Social & environmental conditions, and public policies that enhance health for individuals and communities

Health Protection And Promotion Act:

34 municipal / regional
public health units



Public Health Programs

- Healthy public policy, education/outreach, community development, epidemiology
- Direct services: dental care, infant hearing screening, pre/postnatal and parenting support, needle exchange, sexual health clinics, school and flu immunization...
- Health protection: restaurant and personal services inspection, safe drinking water, communicable disease prevention + control

- Advice / education to the public
- Positive tests notified to public health →
- Case management, contact investigation/follow-up
- Epidemiologic surveillance → policy changes
- Outbreak control measures in institutions and community settings
- Legal powers relevant to COVID:
 - Section 22 order: people who are infectious must isolate
 - Section 22 “class order”: owners/operators must follow specific COVID precautions
 - Section 29.2 order: require operator of an institution to carry out specified activities to “monitor, investigate and respond to an outbreak”...bridge to MLTC management order

HOW PUBLIC HEALTH IS FIGHTING COVID-19:

Investigate cases & contacts



Identify where someone got COVID-19 & who they have spread it to

Study data



Track COVID-19 cases to learn how to stop its spread

Protect the vulnerable



Help prevent & control outbreaks in higher risk settings

Provide leadership & advice



Work together with local government & partners to fight COVID-19

Keep you updated



Give you credible information on COVID-19 & answer your questions

Adapted with permission from Toronto Public Health



COVID Wise Together

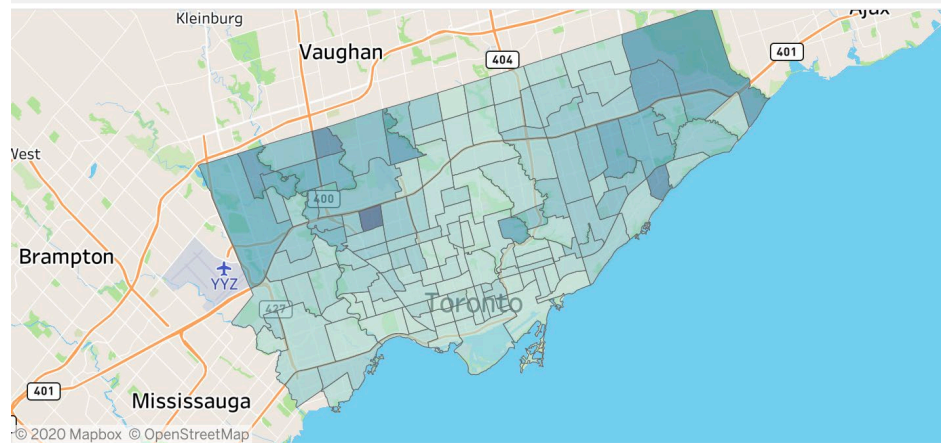
OttawaPublicHealth.ca/COVIDWiseTogether



COVID avisés ensemble

SantePubliqueOttawa.ca/COVIDAviserEnsemble

Map of Recent COVID-19 Rates by Neighbourhood - October 26, 2020 to November 15, 2020



Public health management for people with COVID (cases)

- Call from public health staff
- Home isolation while infectious = 10 days from symptom onset (or when +ve test was collected, if no symptoms)
- “Cleared” for infectiousness \neq “ready to return to work”

- Contact tracing
 - 2d prior to symptoms \rightarrow in isolation
- Household in home quarantine for 14 days = incubation period



Community exposure

- known case in household or friends/family
- high risk events – large groups, no mask, no distance

Workplace transmission

- risk assessment – possible high risk exposures?
- results of workplace testing
- results of workplace symptom screening / sick calls
→testing

Outbreaks in healthcare settings

- residents / patients live there – can't go “home” to isolate
- residents / patients vulnerable to severe COVID illness
- lots of direct care, close interaction

- Careful PPE and IPAC practices
- Testing, IPAC support
- Staff-staff transmission – supporting each other in good IPAC practices



Advantages

- Cases and contacts can isolate at home, away from workplace
- Working-age people generally lower risk of severe outcomes

Challenges

- crowding often critical factor – at workplace, or in dorm accommodation (eg mines, farms)
- noise levels → shouting spreads more droplets
- physical work → can interfere with PPE/mask use
- IPAC/PPE and testing infrastructure



Questions?

Be Calm

Be Kind

Be Safe

- Dr Bonnie Henry



<https://www.toronto.ca/home/covid-19/>

<https://www.publichealthontario.ca/en/diseases-and-conditions/infectious-diseases/respiratory-diseases/novel-coronavirus>